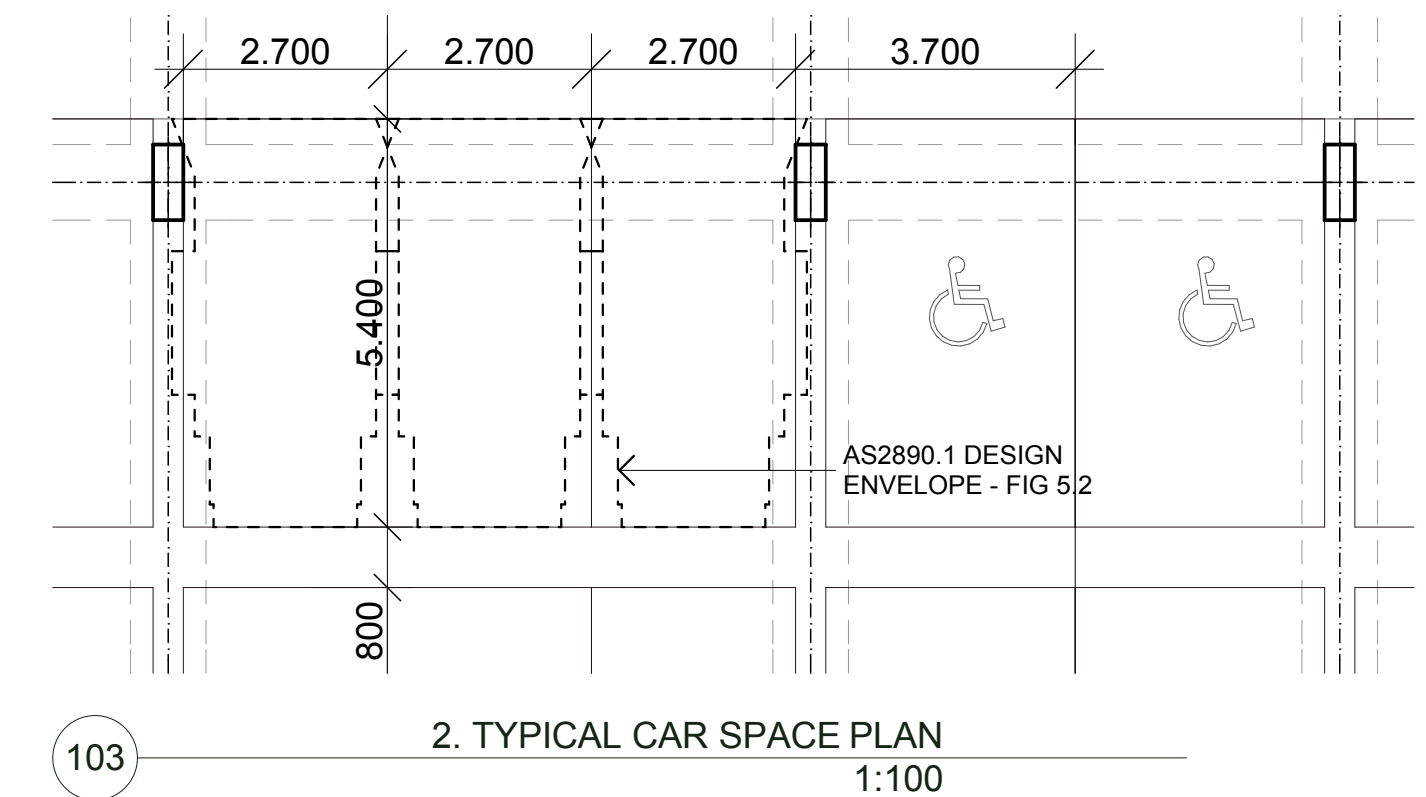


project
ALTERATIONS AND ADDITIONS TO
49-61 SPENCER STREET
LOT 1 / DP 730010
49-61 SPENCER STREET
FAIRFIELD NSW 2165
drawing title

project n°	drawing n°	revision	date
SD1044	DA 102	P	20/06/2011
director / ad	drawn	checked	scale
RD	CM		1:200 on A1

Sydney Office
Level 21, 321 Kent Street
Sydney NSW 2000
Tel: +61 2 8233 9900
Fax: +61 2 8233 9966
Australia • Asia • Middle East
info@urbis.com.au
www.urbis.com.au
Urbis Pty Ltd ABN 50 105 256 228
Reg Arch N° 7061 Land Arch N°: 089





108 CAR PARKING SPACES - COMMERCIAL
12 CAR PARKING SPACES - RESIDENTIAL

disclaimer

Use figured dimensions only, all dimensions must be verified. Refer any discrepancies to Urbis Pty Ltd. Detailed survey work has not been undertaken by Urbis prior to finalising this drawing. Figured dimensions are approximate. Accurate dimensions may be required to be surveyed at a later date if or as required to clarify certain aspects of this drawing.

Copyright of this drawing and the designs executed remain vested in Urbis Pty Ltd. This drawing or parts thereof may not be reproduced for any purpose without the consent of Urbis Pty Ltd

prepared for

THE CHASE CENTRE MANAGEMENT

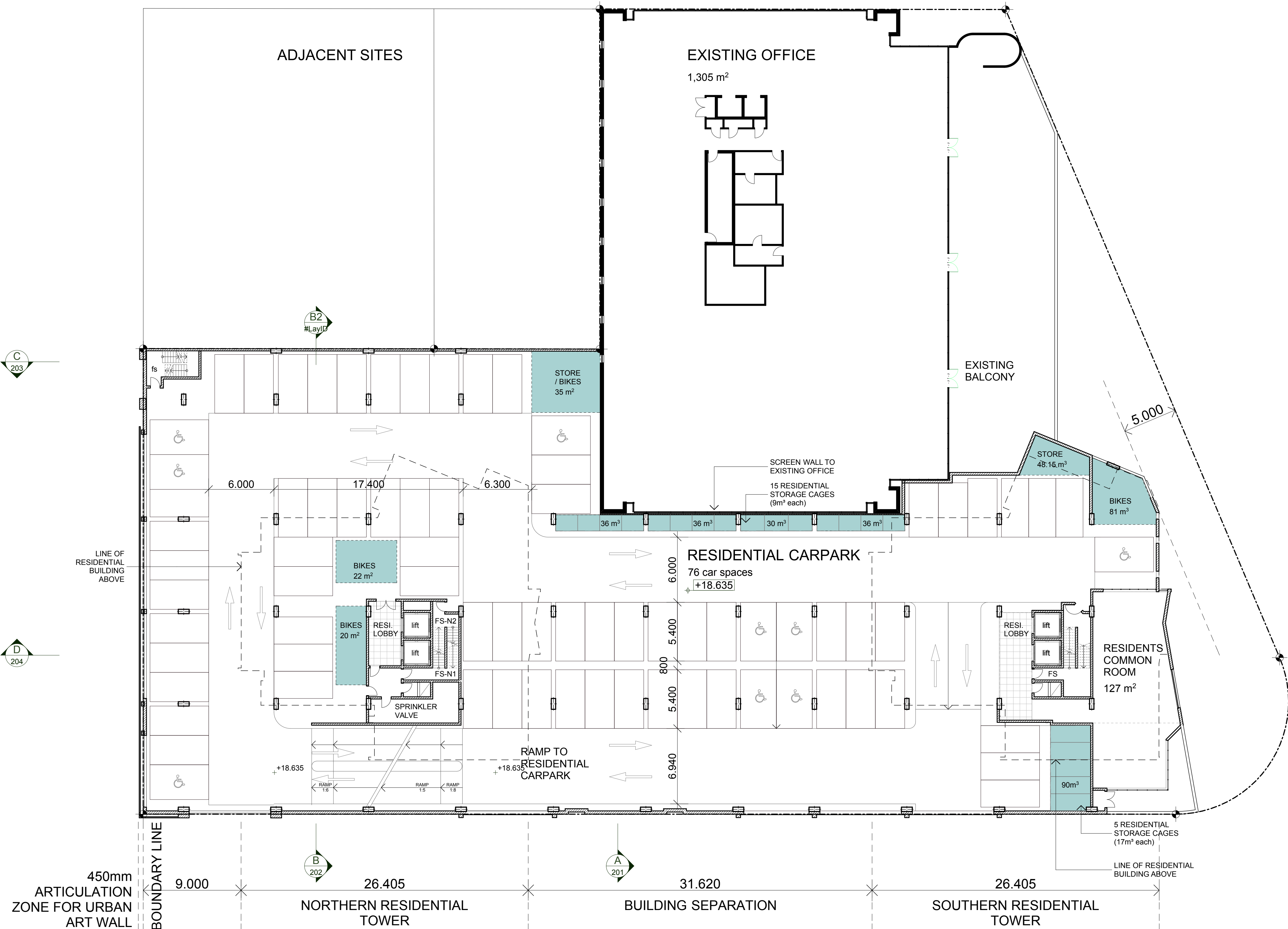
project
ALTERATIONS AND ADDITIONS TO
49-61 SPENCER STREET
LOT 1 / DP 730010
49-61 SPENCER STREET
FAIRFIELD NSW 2165
drawing title

LEVEL 1 CARPARK PLAN

project n°	drawing n°	revision	date
SD1044	DA 103	P	20/06/2011
director / ad	drawn	checked	scale
RD	CM		1:200, 1:100 on A1

Sydney Office
Level 21, 321 Kent Street
Sydney NSW 2000
Tel: +61 2 8233 9900
Fax: +61 2 8233 9966
Australia • Asia • Middle East
info@urbis.com.au
www.urbis.com.au
Urbis Pty Ltd. ABN 50 105 256 228
Reg Arch N° 7061 Land Arch N°: 089





- EXISTING COLUMN TO BE DEMOLISHED
- EXISTING COLUMN TO BE RETAINED
- NEW COLUMN
- EXISTING WALL
- NEW CONCRETE BLOCK WALL
- BREAK-THROUGH WALL
- PLANTER WALL FOR 600mm PLANTER
- PLANTER WALL FOR 450mm PLANTER WITH SEAT DETAIL

73 CAR PARKING SPACES - RESIDENTIAL

Q	19.08.11	Final set for DA to Council
N	19.08.11	Final set for DA issue to consultants
M	20.02.11	Internal review and amendments
L	19.02.11	Review of set, Amendments of drawings plan set, issued to consultant
K	18.11.10	Amendments of drawings set to Site Specific DCP Setbacks issued to all
J	18.11.10	Elevations and Section to new Levels, apartment numbers issued to BASIX
I	18.11.10	Levels amended - Plans Sections issued to consultants
H	18.11.10	Option to move North Tower, Childcare added to 1st level (option)
G	20.10.10	Commercial amended - Plans
F	20.10.10	preliminary DA set
E	20.10.10	amendments to typical residential, blades deleted to east, Firestairs on podium
D	19.10.10	notes on elevations, ISSUE - for consultant & client review
C	19.08.10	revise upper penthouse to v2
B	19.08.10	revise elevations, ISSUE - for consultant & client review
A	19.08.10	DRAFT ISSUE - for consultant review
rev	date	revision details

NOT FOR CONSTRUCTION - FOR DA PURPOSES ONLY

disclaimer
Use figured dimensions only, all dimensions must be verified. Rely on any discrepancies to Urbis Pty Ltd. Detailed survey work has not been undertaken by Urbis prior to finalising this drawing. Figured dimensions are approximate. Accurate dimensions may be required to be surveyed at a later date if or as required to clarify certain aspects of this drawing.
Copyright of this drawing and the designs executed remain vested in Urbis Pty Ltd. This drawing or parts thereof may not be reproduced for any purpose without the consent of Urbis Pty Ltd.

consultants

prepared for
THE CHASE CENTRE MANAGEMENT

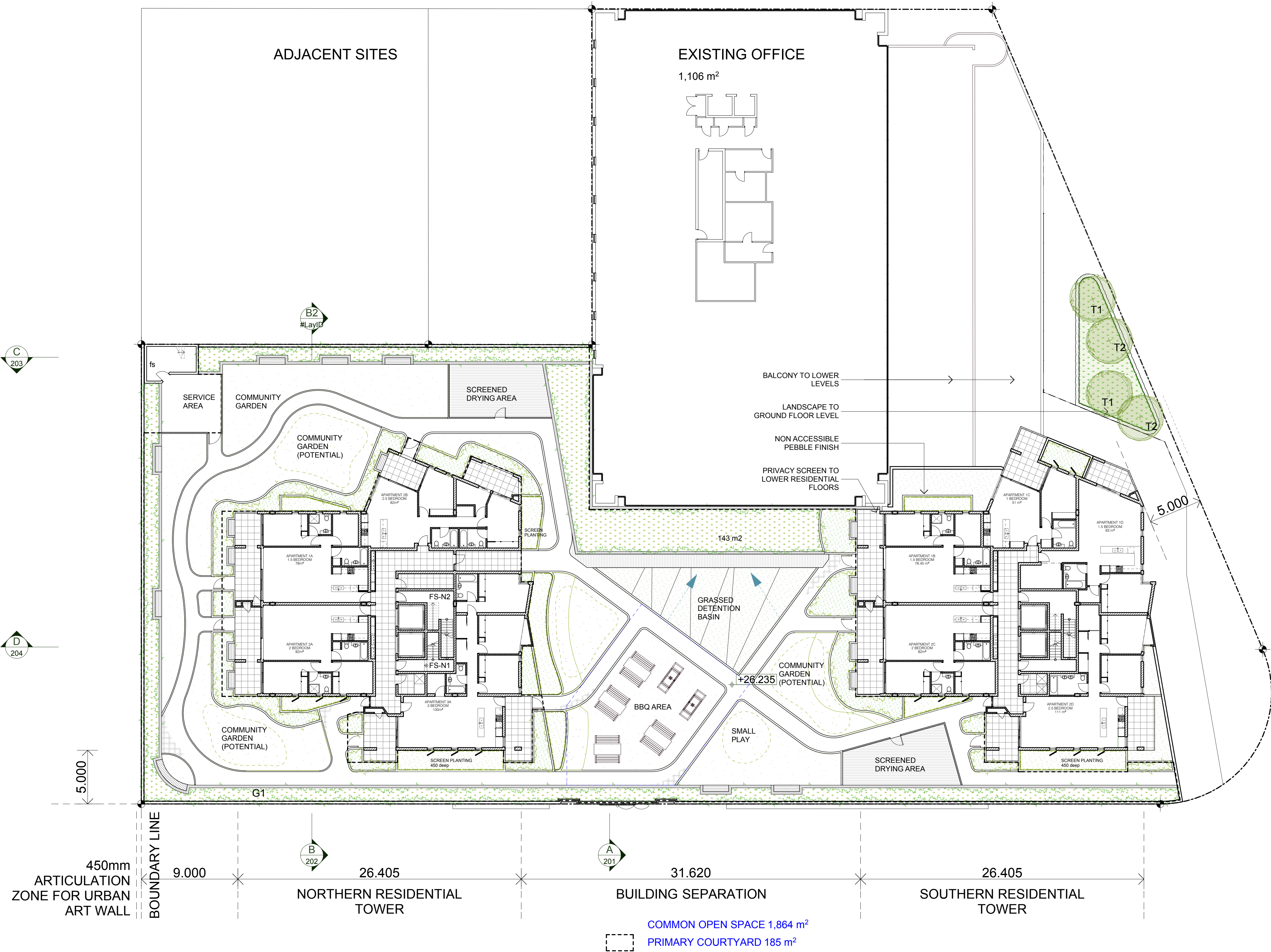
project
ALTERATIONS AND ADDITIONS TO
49-61 SPENCER STREET
LOT 1 / DP 730010
49-61 SPENCER STREET
FAIRFIELD NSW 2165

drawing title
LEVEL 2 CARPARK PLAN

project n°	drawing n°	revision	date
SD1044	DA 104	P	20/06/2011
director / ad	drawn	checked	scale
RD	CM		1:200 on A1

Sydney Office
Level 21, 321 Kent Street
Sydney NSW 2000
Tel: +61 2 8233 9900
Fax: +61 2 8233 9966
Australia • Asia • Middle East
info@urbis.com.au
www.urbis.com.au
Urbis Pty Ltd ABN 50 105 256 228
Reg Arch N° 7061 Land Arch N°: 089





Q	19.08.11	Final set for DA to Council
N	19.08.11	Final set for DA issue to consultants
N	20.02.11	Internal review and amendments
M	16.02.11	Review of set, Amendments of drawings plan set, issued to consultant
L	11.02.11	Amendments of drawings set to Site Specific DCP Setbacks issued to all
K	18.11.10	Elevations and Section to new Levels, apartment numbers issued to BASIX
J	16.11.10	Levels amended - Plans Sections issued to consultants
I	11.11.10	Option to move North Tower, Childcare added to 1st level (option)
H	26.10.10	Commercial amended - Plans
G	26.10.10	preliminary DA set
F	26.10.10	amendments to typical residential, blades deleted to east, Firestairs on podium
E	10.10.10	notes on elevations, ISSUE - for consultant & client review
D	26.08.10	revise upper penthouse to v2
C	01.08.10	revise elevations, ISSUE - for consultant & client review
B	16.08.10	DRAFT ISSUE - for consultant review
A	23.07.10	DRAFT ISSUE - for consultant review
rev	date	revision details
status	NOT FOR CONSTRUCTION - FOR DA PURPOSES ONLY	

disclaimer
Use figured dimensions only, all dimensions must be verified. Rely on any discrepancies to Urbis Pty Ltd. Detailed survey work has not been undertaken by Urbis prior to finalising this drawing. Figured dimensions are approximate. Accurate dimensions may be required to be surveyed at a later date if or as required to clarify certain aspects of this drawing.
Copyright of this drawing and the designs executed remain vested in Urbis Pty Ltd. This drawing or parts thereof may not be reproduced for any purpose without the consent of Urbis Pty Ltd.

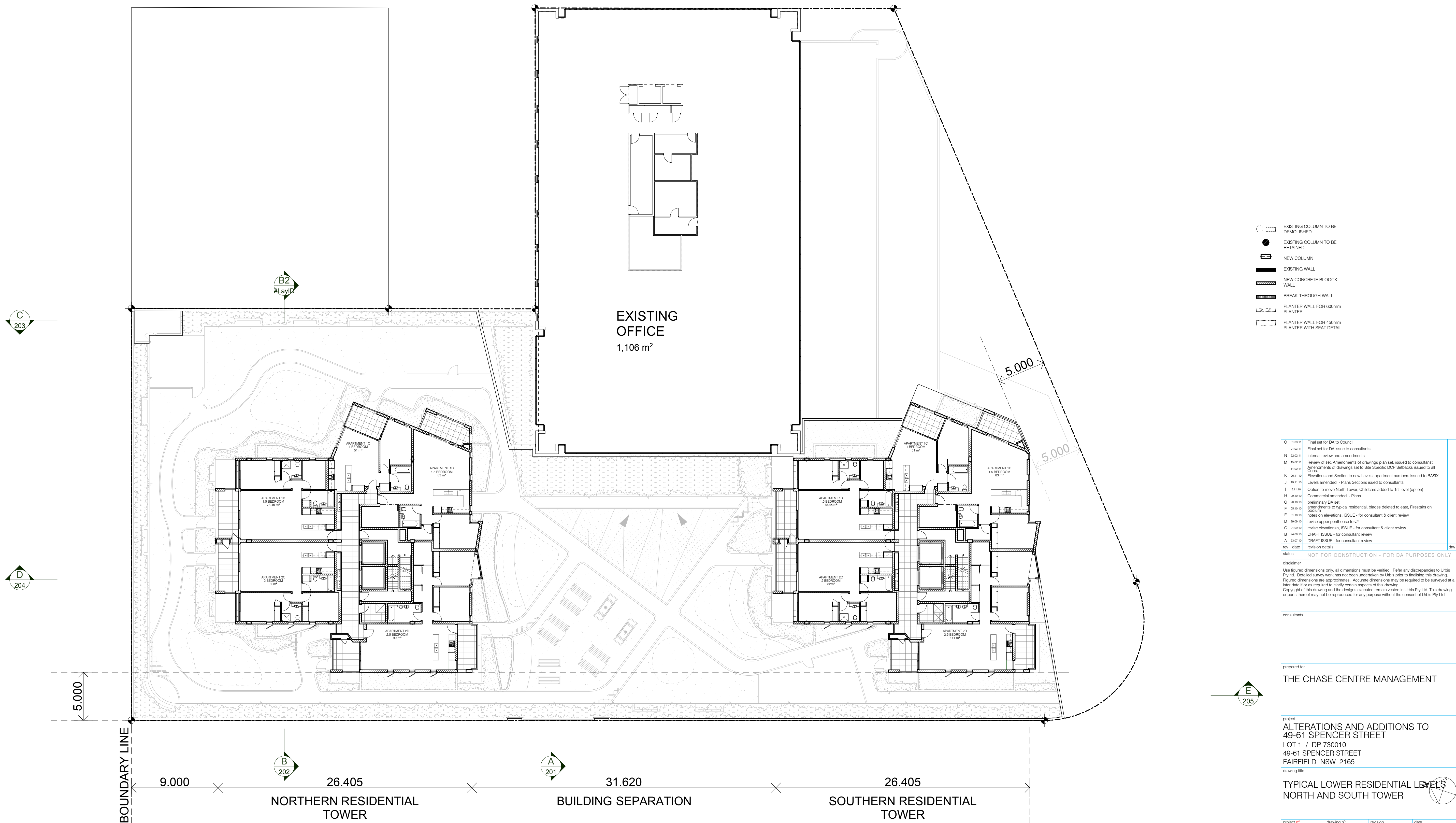
consultants

prepared for
THE CHASE CENTRE MANAGEMENT

project
**ALTERATIONS AND ADDITIONS TO
49-61 SPENCER STREET
LOT 1 / DP 730010
49-61 SPENCER STREET
FAIRFIELD NSW 2165**

drawing title
**LEVEL 4 PODIUM ROOF & LANDSCAPE
PLAN**

project n°	drawing n°	revision	date
SD1044	DA 106	P	20/06/2011
director / ad	drawn	checked	scale
RD	CM		1:200 on A1



O	19.08.11	Final set for DA to Council
N	19.08.11	Final set for DA issue to consultants
M	20.02.11	Internal review and amendments
L	19.02.11	Review of set, Amendments of drawings plan set, issued to consultant
K	11.02.11	Amendments of drawings set to Site Specific DCP Setbacks issued to all
J	28.11.10	Elevations and Section to new Levels, apartment numbers issued to BASIX
I	18.11.10	Levels amended - Plans Sections issued to consultants
H	11.11.10	Option to move North Tower, Childcare added to 1st level (option)
G	28.10.10	Commercial amended - Plans
F	28.10.10	preliminary DA set
E	26.10.10	amendments to typical residential, blades deleted to east, Firestairs on
D	01.10.10	notes on elevations, ISSUE - for consultant & client review
C	28.08.10	revise upper penthouse to v2
B	01.08.10	revise elevations, ISSUE - for consultant & client review
A	28.07.10	DRAFT ISSUE - for consultant review
rev	date	revision details

NOT FOR CONSTRUCTION - FOR DA PURPOSES ONLY

disclaimer
Use figured dimensions only, all dimensions must be verified. Rely on any discrepancies to Urbis Pty Ltd. Detailed survey work has not been undertaken by Urbis prior to finalising this drawing. Figured dimensions are approximate. Accurate dimensions may be required to be surveyed at a later date if or as required to clarify certain aspects of this drawing.
Copyright of this drawing and the designs executed remain vested in Urbis Pty Ltd. This drawing or parts thereof may not be reproduced for any purpose without the consent of Urbis Pty Ltd.

consultants

prepared for
THE CHASE CENTRE MANAGEMENT

project
ALTERATIONS AND ADDITIONS TO
49-61 SPENCER STREET
LOT 1 / DP 730010
49-61 SPENCER STREET
FAIRFIELD NSW 2165
drawing title

TYPICAL LOWER RESIDENTIAL LEVELS
NORTH AND SOUTH TOWER

project n°	drawing n°	revision	date
SD1044	DA 107	P	20/06/2011
director / ad	drawn	checked	scale
RD	CM		1:200 on A1

Sydney Office
Level 21, 321 Kent Street
Sydney NSW 2000
Tel: +61 2 8233 9900
Fax: +61 2 8233 9966
Australia • Asia • Middle East
info@urbis.com.au
www.urbis.com.au
Urbis Pty Ltd ABN 50 105 256 228
Reg Arch N° 7061 Land Arch N°: 089





- EXISTING COLUMN TO BE DEMOLISHED
- EXISTING COLUMN TO BE RETAINED
- NEW COLUMN
- EXISTING WALL
- NEW CONCRETE BLOCK WALL
- BREAK-THROUGH WALL
- PLANTER WALL FOR 600mm PLANTER
- PLANTER WALL FOR 450mm PLANTER WITH SEAT DETAIL

O	19.03.11	Final set for DA to Council
N	19.03.11	Final set for DA issue to consultants
M	20.02.11	Internal review and amendments
L	19.02.11	Review of set, Amendments of drawings plan set, issued to consultant
K	18.11.10	Amendments of drawings set to Site Specific DCP Setbacks issued to all
J	18.11.10	Elevations and Section to new Levels, apartment numbers issued to BASIX
I	18.11.10	Levels amended - Plans Sections issued to consultants
H	18.11.10	Option to move North Tower, Childcare added to 1st level (option)
G	20.10.10	Commercial amended - Plans
F	20.10.10	preliminary DA set
E	20.10.10	amendments to typical residential, blades deleted to east, Firestairs on podium
D	19.10.10	notes on elevations, ISSUE - for consultant & client review
C	19.08.10	revise upper penthouse to v2
B	19.08.10	revise elevations, ISSUE - for consultant & client review
A	19.07.10	DRAFT ISSUE - for consultant review
rev	date	revision details

NOT FOR CONSTRUCTION - FOR DA PURPOSES ONLY

disclaimer

Use figured dimensions only, all dimensions must be verified. Rely on any discrepancies to Urbis Pty Ltd. Detailed survey work has not been undertaken by Urbis prior to finalising this drawing. Figured dimensions are approximate. Accurate dimensions may be required to be surveyed at a later date if or as required to clarify certain aspects of this drawing. Copyright of this drawing and the designs executed remain vested in Urbis Pty Ltd. This drawing or parts thereof may not be reproduced for any purpose without the consent of Urbis Pty Ltd.

consultants

prepared for

THE CHASE CENTRE MANAGEMENT

project

ALTERATIONS AND ADDITIONS TO
49-61 SPENCER STREET
LOT 1 / DP 730010
49-61 SPENCER STREET
FAIRFIELD NSW 2165

drawing title

TYPICAL UPPER RESIDENTIAL LEVELS
NORTH AND SOUTH TOWER

project n°	drawing n°	revision	date
SD1044	DA 108	P	20/06/2011
director / ad	drawn	checked	scale
RD	CM		1:200 on A1

Sydney Office
Level 21, 321 Kent Street
Sydney NSW 2000

Tel: +61 2 8233 9900
Fax: +61 2 8233 9966

Australia • Asia • Middle East
info@urbis.com.au
www.urbis.com.au

Urbis Pty Ltd ABN 50 105 256 228
Reg Arch N° 7061 Land Arch N°: 089

urbis



- EXISTING COLUMN TO BE DEMOLISHED
- EXISTING COLUMN TO BE RETAINED
- NEW COLUMN
- EXISTING WALL
- NEW CONCRETE BLOCK WALL
- BREAK-THROUGH WALL
- PLANTER WALL FOR 600mm PLANTER
- PLANTER WALL FOR 450mm PLANTER WITH SEAT DETAIL

O	19.08.11	Final set for DA to Council
N	19.08.11	Final set for DA issue to consultants
M	20.02.11	Internal review and amendments
L	19.02.11	Review of set, Amendments of drawings plan set, issued to consultant
K	11.02.11	Amendments of drawings set to Site Specific DCP Setbacks issued to all
J	18.11.10	Elevations and Section to new Levels, apartment numbers issued to BASIX
I	18.11.10	Levels amended - Plans Sections issued to consultants
H	11.11.10	Option to move North Tower, Childcare added to 1st level (option)
G	20.10.10	Commercial amended - Plans
F	20.10.10	preliminary DA set
E	20.10.10	amendments to typical residential, blades deleted to east, Firestairs on podium
D	10.10.10	notes on elevations, ISSUE - for consultant & client review
C	20.08.10	revise upper penthouse to v2
B	01.08.10	revise elevations, ISSUE - for consultant & client review
A	18.08.10	DRAFT ISSUE - for consultant review
	20.07.10	DRAFT ISSUE - for consultant review
rev	date	revision details

NOT FOR CONSTRUCTION - FOR DA PURPOSES ONLY

disclaimer
Use figured dimensions only, all dimensions must be verified. Rely on any discrepancies to Urbis Pty Ltd. Detailed survey work has not been undertaken by Urbis prior to finalising this drawing. Figured dimensions are approximate. Accurate dimensions may be required to be surveyed at a later date for or as required to clarify certain aspects of this drawing. Copyright of this drawing and the designs executed remain vested in Urbis Pty Ltd. This drawing or parts thereof may not be reproduced for any purpose without the consent of Urbis Pty Ltd.

consultants

prepared for
THE CHASE CENTRE MANAGEMENT

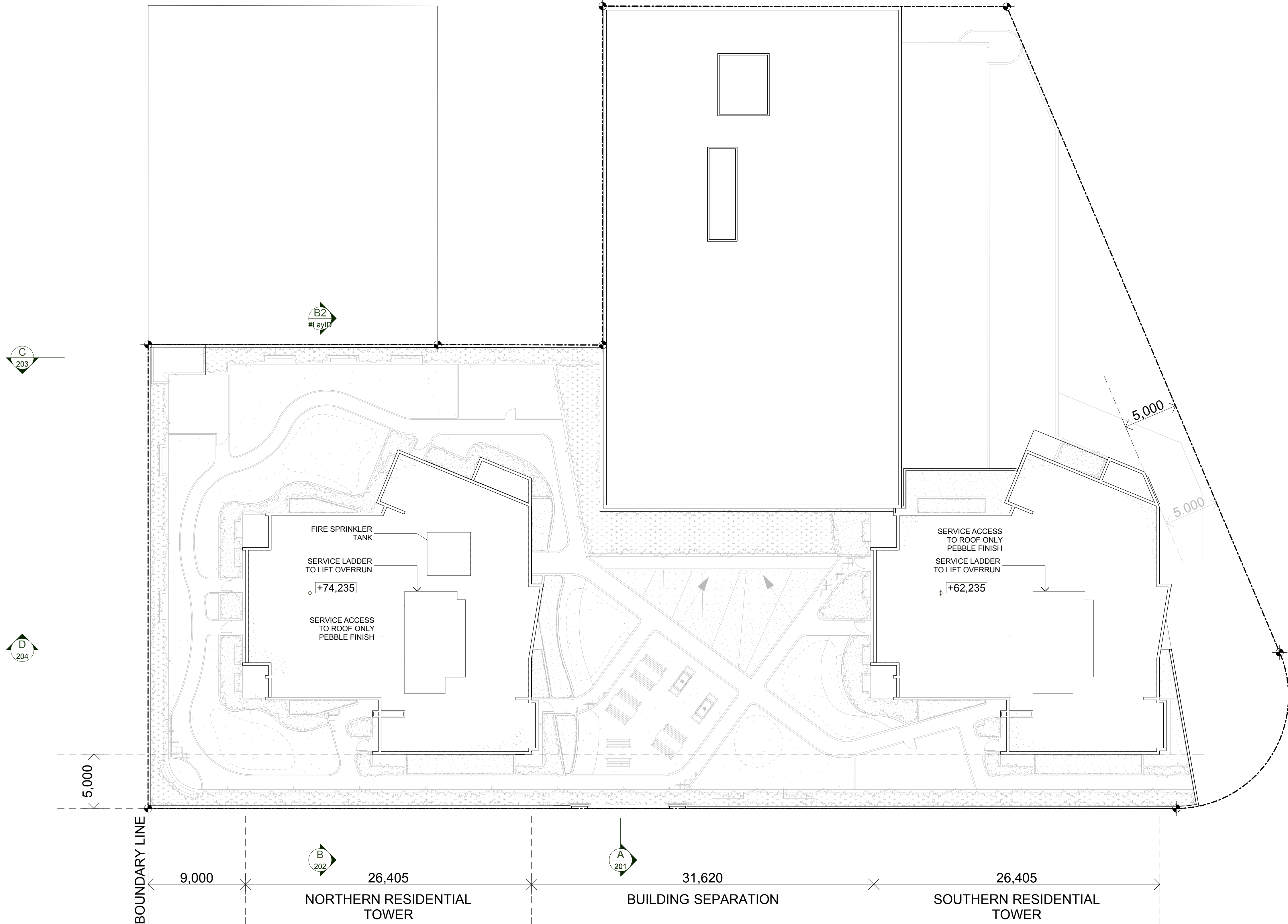
project
**ALTERATIONS AND ADDITIONS TO
49-61 SPENCER STREET
LOT 1 / DP 730010
49-61 SPENCER STREET
FAIRFIELD NSW 2165**

drawing title
**TYPICAL PENTHOUSE LEVELS NORTH
AND SOUTH TOWER**

project n°	drawing n°	revision	date
SD1044	DA 109	P	20/06/2011
director / ad	drawn	checked	scale
RD	CM		1:200 on A1

Sydney Office
Level 21, 321 Kent Street
Sydney NSW 2000
Tel: +61 2 8233 9900
Fax: +61 2 8233 9966
Australia • Asia • Middle East
info@urbis.com.au
www.urbis.com.au
Urbis Pty Ltd ABN 50 105 256 228
Reg Arch N° 7061 Land Arch N° 089





- EXISTING COLUMN TO BE DEMOLISHED
- EXISTING COLUMN TO BE RETAINED
- NEW COLUMN
- EXISTING WALL
- NEW CONCRETE BLOCK WALL
- BREAK-THROUGH WALL
- PLANTER WALL FOR 600mm PLANTER
- PLANTER WALL FOR 450mm PLANTER WITH SEAT DETAIL

O	19.03.11	Final set for DA to Council
N	20.02.11	Final set for DA issue to consultants
M	20.02.11	Internal review and amendments
L	11.02.11	Review of set, Amendments of drawings plan set, issued to consultant
K	28.11.10	Amendments of drawings set to Site Specific DCP Setbacks issued to all
J	18.11.10	Elevations and Section to new Levels, apartment numbers issued to BASIX
I	11.11.10	Levels amended - Plans Sections issued to consultants
H	28.10.10	Option to move North Tower, Childcare added to 1st level (option)
G	28.10.10	Commercial amended - Plans
F	26.10.10	preliminary DA set
E	01.10.10	amendments to typical residential, blades deleted to east, Firestairs on podium
D	26.08.10	notes on elevations, ISSUE - for consultant & client review
C	01.08.10	revise upper penthouse to v2
B	18.08.10	revise elevations, ISSUE - for consultant & client review
A	20.07.10	DRAFT ISSUE - for consultant review
rev	date	revision details

NOT FOR CONSTRUCTION - FOR DA PURPOSES ONLY

status

disclaimer
Use figured dimensions only, all dimensions must be verified. Rely on any discrepancies to Urbis Pty Ltd. Detailed survey work has not been undertaken by Urbis prior to finalising this drawing. Figured dimensions are approximate. Accurate dimensions may be required to be surveyed at a later date for or as required to clarify certain aspects of this drawing. Copyright of this drawing and the designs executed remain vested in Urbis Pty Ltd. This drawing or parts thereof may not be reproduced for any purpose without the consent of Urbis Pty Ltd.

consultants

prepared for

THE CHASE CENTRE MANAGEMENT

project

ALTERATIONS AND ADDITIONS TO
49-61 SPENCER STREET
LOT 1 / DP 730010
49-61 SPENCER STREET
FAIRFIELD NSW 2165

drawing title

ROOF PLAN

project n°	drawing n°	revision	date
SD1044	DA 110	P	20/06/2011
director / ad	drawn	checked	scale
RD	CM		1:200 on A1

Sydney Office
Level 21, 321 Kent Street
Sydney NSW 2000

Tel: +61 2 8233 9900
Fax: +61 2 8233 9966

Australia • Asia • Middle East
info@urbis.com.au
www.urbis.com.au

Urbis Pty Ltd ABN 50 105 256 228
Reg Arch N° 7061 Land Arch N°: 089





disclaimer

Use figured dimensions only, all dimensions must be verified. Refer any discrepancies to Urbis Pty Ltd.

Detailed survey work has not been undertaken by Urbis prior to finalising this drawing.

Figured dimensions are approximates. Accurate dimensions may be required to be surveyed at a later date if or as required to clarify certain aspects of this drawing.

prepared for

THE CHASE CENTRE MANAGEMENT

INDICATIVE GROUND FLOOR
DEMOLITION

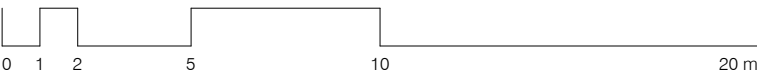
LEVEL 21, 321 KENT STREET SYDNEY
NSW 2000 AUSTRALIA

TEL + 61 2 8233 9900
FAX + 61 2 8233 9966

info@urbis.com.au
www.urbis.com.au

Urbis Pty Ltd ABN 50 105 256 228
Australia , Asia , Middle East
Reg Arch N° **7061** Land Arch N°: **089**

urbis



- EXISTING COLUMN TO BE DEMOLISHED
- EXISTING COLUMN TO BE RETAINED
- NEW COLUMN
- EXISTING WALL
- NEW CONCRETE BLOCK WALL
- BREAK-THROUGH WALL
- PLANTER WALL FOR 600mm PLANTER
- PLANTER WALL FOR 450mm PLANTER WITH SEAT DETAIL
- EXISTING STRUCTURE TO BE ALTERED/DEMOLISHED
- EXISTING OFFICE STRUCTURE TO BE RETAINED
- CUT-OUT EXISTING SLAB TO ALLOW FOR NEW COLUMN AND ASSOCIATED SUPPORT PADS

O	19.03.11	Final set for DA to Council
N	22.02.11	Final set for DA issue to consultants
M	15.02.11	Internal review and amendments
L	11.02.11	Review of set, Amendments of drawings plan set, issued to consultant
K	28.11.10	Amendments of drawings set to Site Specific DCP Setbacks issued to all
J	18.11.10	Elevations and Section to new Levels, apartment numbers issued to BASIX
I	11.11.10	Levels amended - Plans Sections issued to consultants
H	11.11.10	Option to move North Tower, Childcare added to 1st level (option)
G	20.10.10	Commercial amended - Plans
F	20.10.10	preliminary DA set
E	08.10.10	amendments to typical residential, blades deleted to east, Firestairs on podium
D	08.10.10	notes on elevations, ISSUE - for consultant & client review
C	20.09.10	revise upper penthouse to v2
B	24.08.10	revise elevations, ISSUE - for consultant & client review
A	23.07.10	DRAFT ISSUE - for consultant review
rev	date	revision details

status: NOT FOR CONSTRUCTION - FOR DA PURPOSES ONLY

disclaimer
Use figured dimensions only, all dimensions must be verified. Refer any discrepancies to Urbis Pty Ltd.
Detailed survey work has not been undertaken by Urbis prior to finalising this drawing.
Figured dimensions are approximate. Accurate dimensions may be required to be surveyed at a later date if or as required to clarify certain aspects of this drawing.

consultants

prepared for
THE CHASE CENTRE MANAGEMENT

Project
ALTERATIONS AND ADDITIONS TO
49-61 SPENCER STREET
LOT 1 / DP 730010
49-61 SPENCER STREET
FAIRFIELD NSW 2165

drawing title
INDICATIVE FIRST FLOOR
DEMOLITION

project n°	drawing n°	revision	date
SD1044	DA 112	O	31/3/2011
director / ad	drawn	checked	scale
RD / ML	CM		1:200 on A1

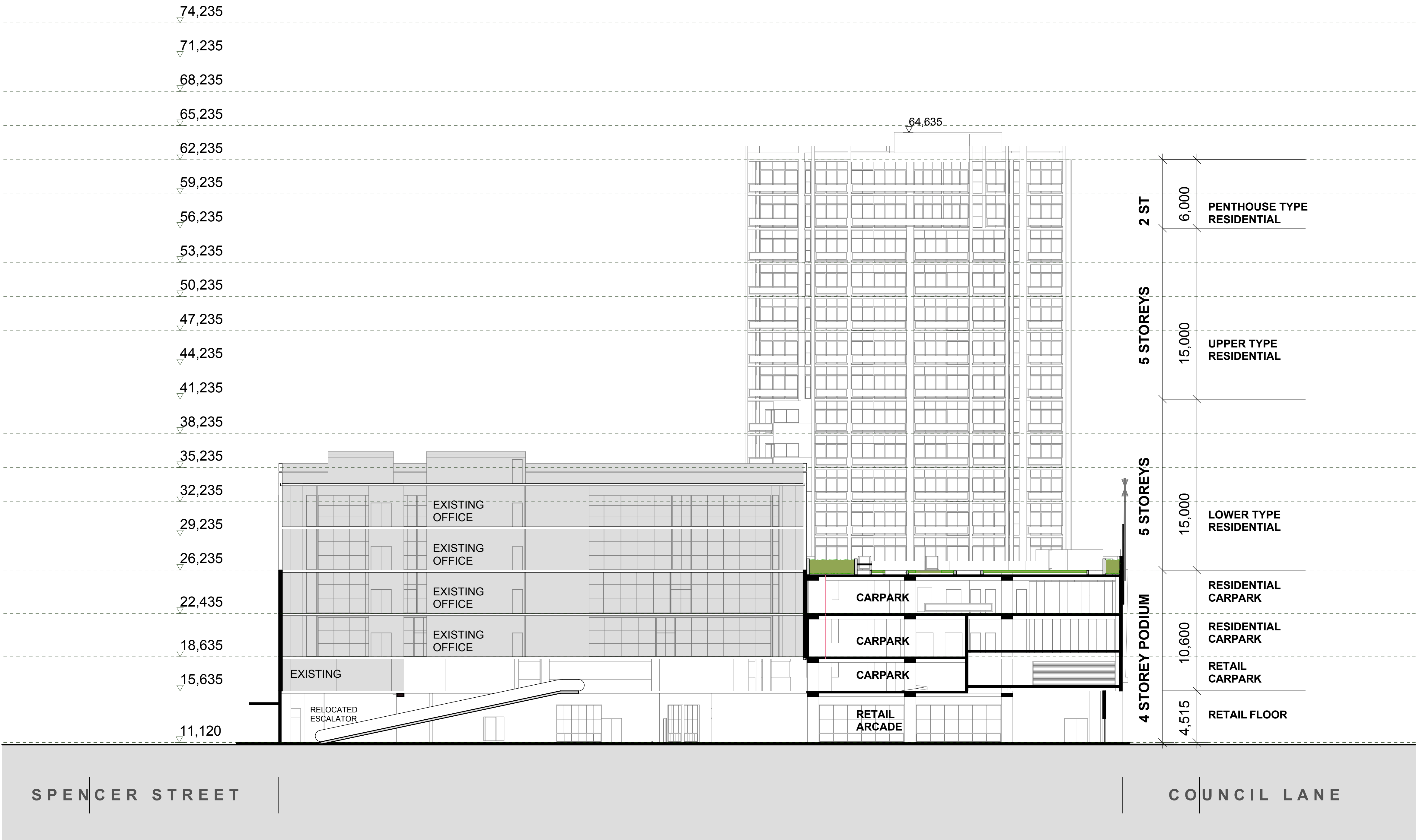
LEVEL 21, 321 KENT STREET SYDNEY
NSW 2000 AUSTRALIA

TEL +61 2 8233 9900
FAX +61 2 8233 9966

info@urbis.com.au
www.urbis.com.au

Urbis Pty Ltd ABN 50 105 256 228
Australia . Asia . Middle East
Reg Arch N° 7061 Land Arch N° 089





O	19.08.11	Final set for DA to Council
N	19.08.11	Final set for DA issue to consultants
N	20.02.11	Internal review and amendments
M	19.02.11	Review of set, Amendments of drawings plan set, issued to consultant
L	11.02.11	Amendments of drawings set to Site Specific DCP Setbacks issued to all
K	28.11.10	Elevations and Section to new Levels, apartment numbers issued to BASIX
J	18.11.10	Levels amended - Plans Sections issued to consultants
I	11.11.10	Option to move North Tower, Childcare added to 1st level (option)
H	28.10.10	Commercial amended - Plans
G	28.10.10	preliminary DA set
F	26.10.10	amendments to typical residential, blades deleted to east, Firestairs on podium
E	01.10.10	notes on elevations, ISSUE - for consultant & client review
D	28.08.10	revise upper penthouse to v2
C	01.08.10	revise elevations, ISSUE - for consultant & client review
B	18.08.10	DRAFT ISSUE - for consultant review
A	23.07.10	DRAFT ISSUE - for consultant review
rev	date	revision details
status		

NOT FOR CONSTRUCTION - FOR DA PURPOSES ONLY

disclaimer
Use figured dimensions only, all dimensions must be verified. Rely on any discrepancies to Urbis Pty Ltd. Detailed survey work has not been undertaken by Urbis prior to finalising this drawing. Figured dimensions are approximate. Accurate dimensions may be required to be surveyed at a later date if or as required to clarify certain aspects of this drawing.
Copyright of this drawing and the designs executed remain vested in Urbis Pty Ltd. This drawing or parts thereof may not be reproduced for any purpose without the consent of Urbis Pty Ltd.

consultants

prepared for

THE CHASE CENTRE MANAGEMENT

project

ALTERATIONS AND ADDITIONS TO
49-61 SPENCER STREET
LOT 1 / DP 730010
49-61 SPENCER STREET
FAIRFIELD NSW 2165

drawing title

SECTION A

project n°	drawing n°	revision	date
SD1044	DA 201	P	20/06/2011
director / ad	drawn	checked	scale
RD	CM		1:200 on A1

Sydney Office
Level 21, 321 Kent Street
Sydney NSW 2000

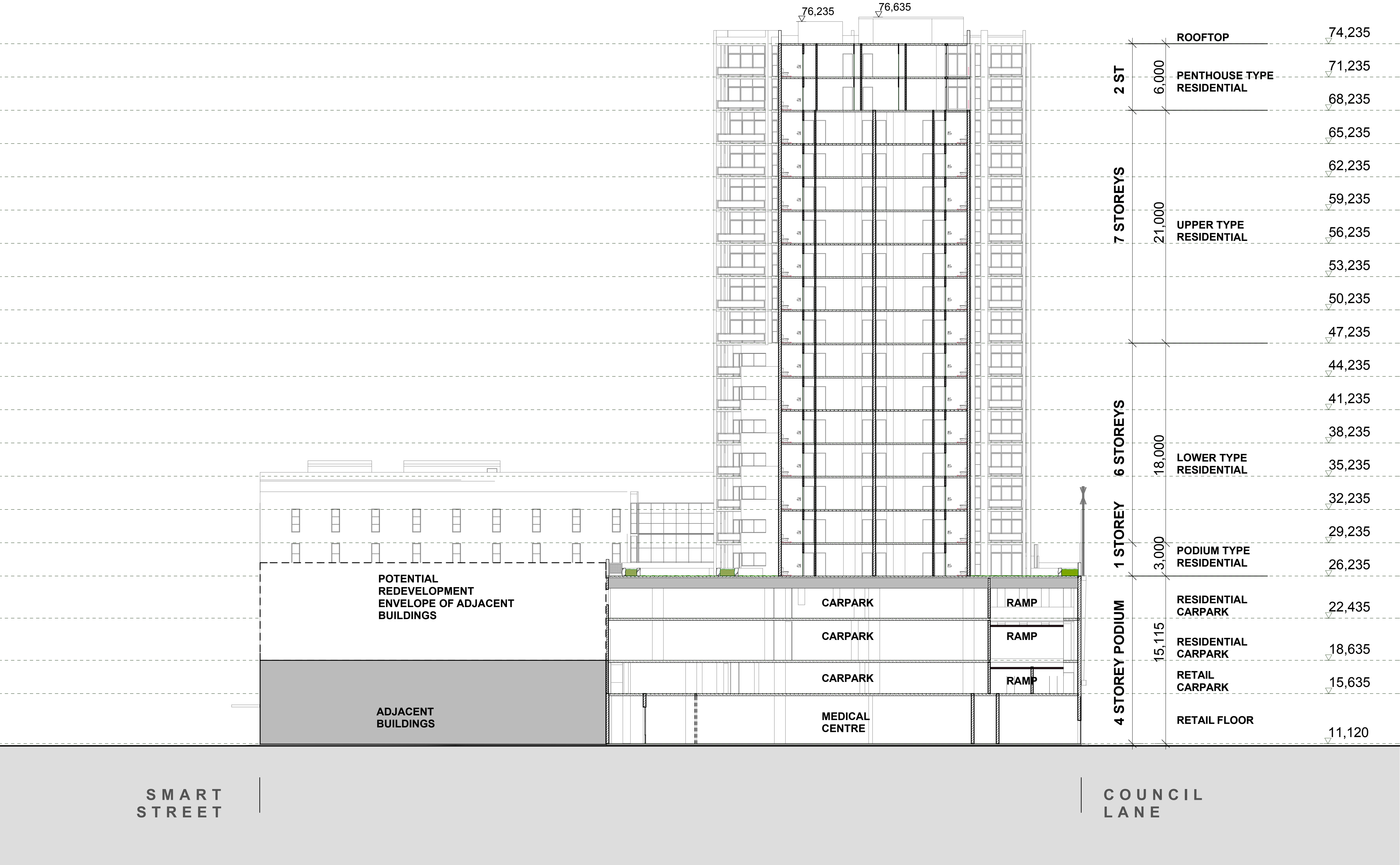
Tel: +61 2 8233 9900
Fax: +61 2 8233 9966

Australia • Asia • Middle East
info@urbis.com.au
www.urbis.com.au

Urbis Pty Ltd ABN 50 105 256 228
Reg Arch N° 7061 Land Arch N°: 089

urbis

SECTION THROUGH EXISTING OFFICE BUILDING AND NEW CARPARK PODIUM
1:200



O	19.03.11	Final set for DA to Council
N	01.03.11	Final set for DA issue to consultants
M	02.02.11	Internal review and amendments
L	15.02.11	Review of set, Amendments of drawings plan set, issued to consultant
K	11.02.11	Amendments of drawings set to Site Specific DCP Setbacks issued to all
J	28.11.10	Elevations and Section to new Levels, apartment numbers issued to BASIX
I	18.11.10	Levels amended - Plans Sections issued to consultants
H	14.11.10	Option to move North Tower, Childcare added to 1st level (option)
G	28.10.10	Commercial amended - Plans
F	20.10.10	preliminary DA set
E	08.10.10	amendments to typical residential, blades deleted to east, Firestairs on podium
D	09.10.10	notes on elevations, ISSUE - for consultant & client review
C	28.09.10	revise upper penthouse to v2
B	09.09.10	revise elevations, ISSUE - for consultant & client review
A	24.08.10	DRAFT ISSUE - for consultant review
rev	23.07.10	DRAFT ISSUE - for consultant review
date		revision details
status		NOT FOR CONSTRUCTION - FOR DA PURPOSES ONLY
drawn		drw

disclaimer
Use figured dimensions only, all dimensions must be verified. Refer any discrepancies to Urbis Pty Ltd.
Detailed survey work has not been undertaken by Urbis prior to finalising this drawing.
Figured dimensions are approximate. Accurate dimensions may be required to be surveyed at a later date if or as required to clarify certain aspects of this drawing.

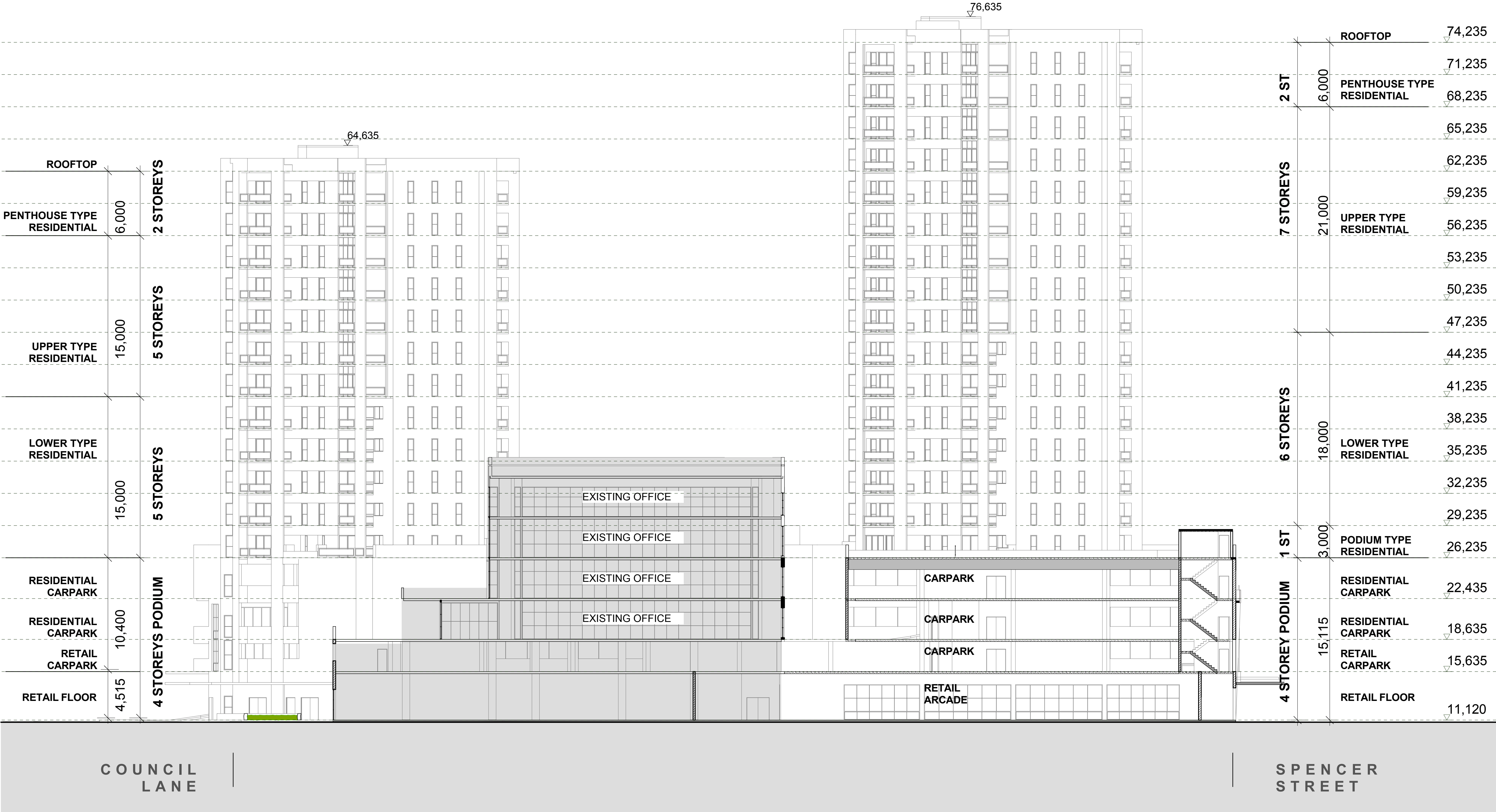
consultants

prepared for
THE CHASE CENTRE MANAGEMENT

project
ALTERATIONS AND ADDITIONS TO
49-61 SPENCER STREET
LOT 1 / DP 730010
49-61 SPENCER STREET
FAIRFIELD NSW 2165

drawing title
SECTION B

project n°	drawing n°	revision	date
SD1044	DA 102	O	31/3/2011
director / ad	drawn	checked	scale
RD / ML	CM		1:200 on A1



O	19.03.11	Final set for DA to Council
N	01.03.11	Final set for DA issue to consultants
M	02.02.11	Internal review and amendments
L	10.02.11	Review of set, Amendments of drawings plan set, issued to consultant
K	11.02.11	Amendments of drawings set to Site Specific DCP Setbacks issued to all
J	26.11.10	Elevations and Section to new Levels, apartment numbers issued to BASIX
I	16.11.10	Levels amended - Plans Sections issued to consultants
H	14.11.10	Option to move North Tower, Childcare added to 1st level (option)
G	26.10.10	Commercial amended - Plans
F	20.10.10	preliminary DA set
E	09.10.10	amendments to typical residential, blades deleted to east, Firestairs on podium
D	09.10.10	notes on elevations, ISSUE - for consultant & client review
C	26.09.10	revise upper penthouse to v2
B	24.08.10	revise elevations, ISSUE - for consultant & client review
A	23.07.10	DRAFT ISSUE - for consultant review
rev	date	revision details
status: NOT FOR CONSTRUCTION - FOR DA PURPOSES ONLY		
drw		

disclaimer
Use figured dimensions only, all dimensions must be verified. Refer any discrepancies to Urbis Pty Ltd.
Detailed survey work has not been undertaken by Urbis prior to finalising this drawing.
Figured dimensions are approximate. Accurate dimensions may be required to be surveyed at a later date if or as required to clarify certain aspects of this drawing.

consultants

prepared for
THE CHASE CENTRE MANAGEMENT

project
ALTERATIONS AND ADDITIONS TO
49-61 SPENCER STREET
LOT 1 / DP 730010
49-61 SPENCER STREET
FAIRFIELD NSW 2165

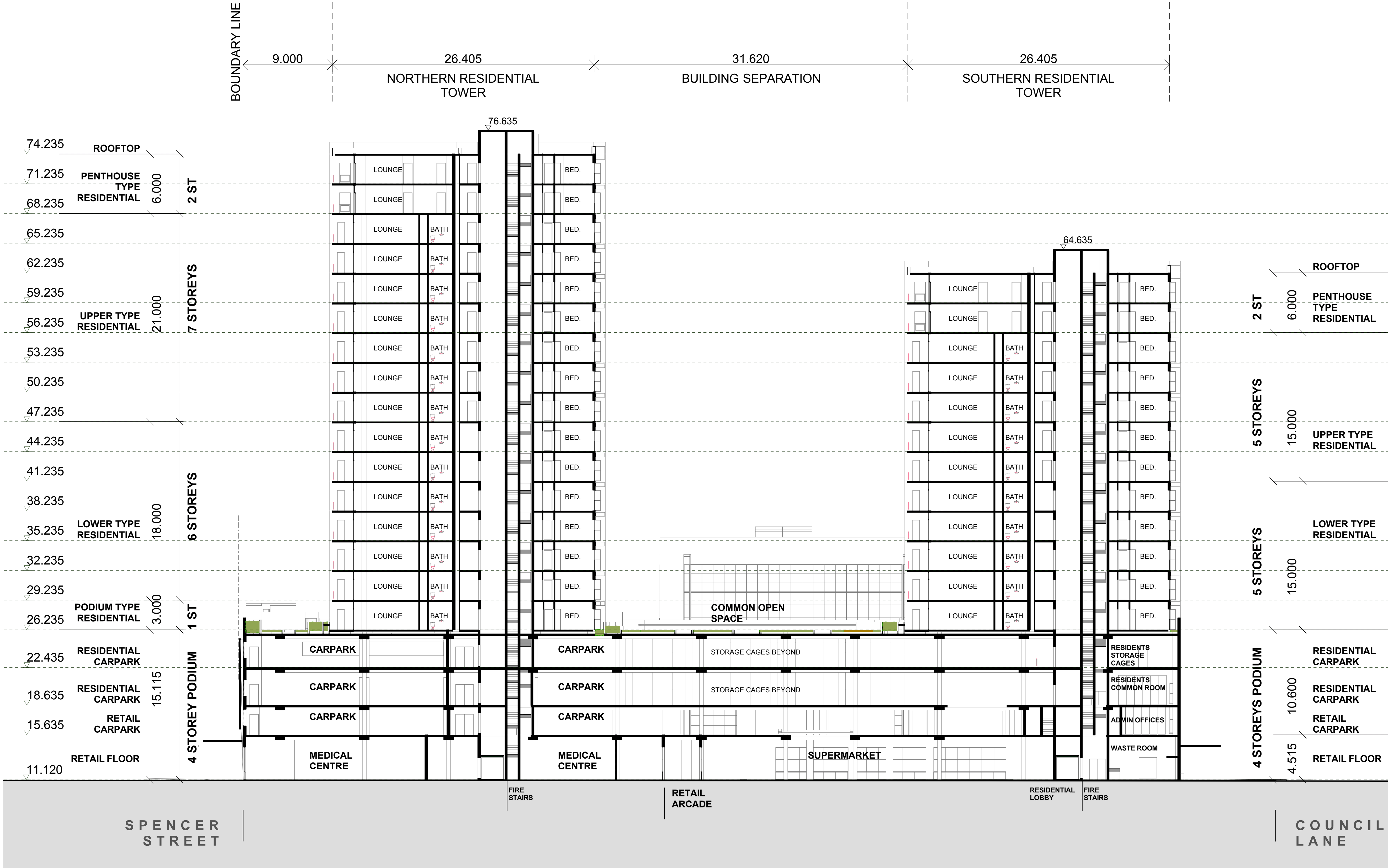
drawing title
SECTION C

project n°	drawing n°	revision	date
SD1044	DA 103	O	31/3/2011
director / ad	drawn	checked	scale
RD / ML	CM		1:200 on A1

LEVEL 21, 321 KENT STREET SYDNEY
NSW 2000 AUSTRALIA
TEL +61 2 8233 9900
FAX +61 2 8233 9966
info@urbis.com.au
www.urbis.com.au
Urbis Pty Ltd ABN 50 105 256 228
Australia . Asia . Middle East
Reg Arch N° 7061 Land Arch N° 089



SECTION THROUGH EXISTING OFFICE BUILDING AND NEW CARPARK PODIUM
1:200



0	19/03/11	Final set for DA to Council
1	20/03/11	Final set for DA issue to consultants
N	22/02/11	Internal review and amendments
M	15/02/11	Review of set, Amendments of drawings plan set, issued to consultants
L	11/02/11	Amendments of drawings set to Site Specific DCP Setbacks issued to all
K	28/11/10	Elevations and Section to new Levels, apartment numbers issued to BASIX
J	18/11/10	Levels amended - Plans Sections issued to consultants
I	11/11/10	Option to move North Tower, Childcare added to 1st level (option)
H	28/10/10	Commercial amended - Plans
G	28/10/10	preliminary DA set
F	24/10/10	amendments to typical residential, blades deleted to east, Firestairs on podium
E	01/10/10	notes on elevations, ISSUE - for consultant & client review
D	28/08/10	revise upper penthouse to v2
C	01/08/10	revise elevations, ISSUE - for consultant & client review
B	24/06/10	DRAFT ISSUE - for consultant review
A	23/07/10	DRAFT ISSUE - for consultant review
rev	date	revision details

status
NOT FOR CONSTRUCTION - FOR DA PURPOSES ONLY
dwg

consultants

prepared for

THE CHASE CENTRE MANAGEMENT

project

ALTERATIONS AND ADDITIONS TO
49-61 SPENCER STREET
LOT 1 / DP 730010
49-61 SPENCER STREET
FAIRFIELD NSW 2165

drawing title

SECTION D

project n°	drawing n°	revision	date
SD1044	DA 204	P	20/06/2011
director / ad	drawn	checked	scale
RD	CM		1:200 on A1

Sydney Office
Level 21, 321 Kent Street
Sydney NSW 2000
Tel: +61 2 8233 9900
Fax: +61 2 8233 9966

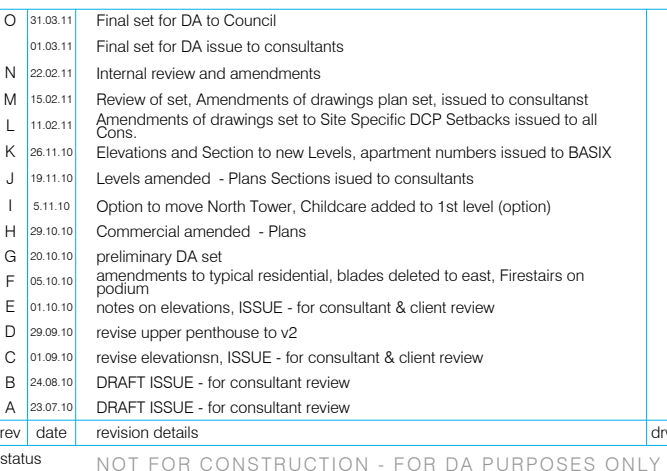
Australia • Asia • Middle East
info@urbis.com.au
www.urbis.com.au

Urbis Pty Ltd ABN 50 105 256 228
Reg Arch N° 7061 Land Arch N°: 089

urbis

SECTION THROUGH NEW CARPARK PODIUM, NORTH & SOUTH RESIDENTIAL TOWERS

1:200



Use figured dimensions only, all dimensions must be verified. Refer any discrepancies to Urbis Pty Ltd. Detailed survey work has not been undertaken by Urbis prior to finalising this drawing. Figured dimensions are approximate. Accurate dimensions may be required to be surveyed at a later date if or as required to clarify certain aspects of this drawing.

Copyright of this drawing and the designs executed remain vested in Urbis Pty Ltd. This drawing or parts thereof may not be reproduced for any purpose without the consent of Urbis Pty Ltd

consultants

prepared for

THE CHASE CENTRE MANAGEMENT

project
ALTERATIONS AND ADDITIONS TO
49-61 SPENCER STREET
LOT 1 / DP 730010
49-61 SPENCER STREET
FAIRFIELD NSW 2165

SECTION E

project n°	drawing n°	revision	date
SD1044	DA 205	P	20/06/2011
director / ad	drawn	checked	scale
RD	CM		1:200 on A1

Sydney Office
Level 21, 321 Kent Street
Sydney NSW 2000
Tel: +61 2 8233 9900
Fax: +61 2 8233 9966

Australia • Asia • Middle East
info@urbis.com.au
www.urbis.com.au

Urbis Pty Ltd ABN 50 105 256 228
Reg Arch N° 7061 Land Arch N°: 089

urbis